

Simplified Chemical Feed

For municipal water treatment applications



CHEM-FEED®

Multi-Diaphragm Metering Pumps

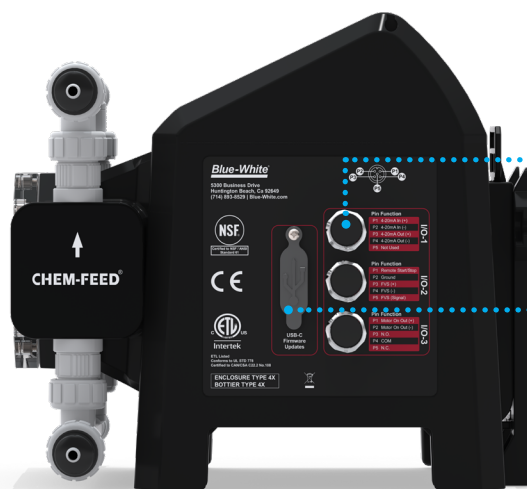
MD1

How does the CHEM-FEED® MD1 simplify chemical feed?



- Heavy-duty display shield**
The UV and chemical-resistant display shield protects controls from harsh environments.
- Intuitive display**
Simplified controls allow users to adjust output accurately, prime the pump, toggle control methods, and more.
- Hyperdrive technology**
Patented Hyperdrive Technology allows alternating pumping action between two diaphragms, resulting in smooth pumping action and reducing the risk of vapor lock.
- Brushless DC motor**
The BLDC motor reduces energy costs and is more durable than AC motors.
- Built-in leak detection**
Patented Diaphragm Failure Detection (DFD) senses diaphragm rupture by detecting chemical in the pump head. There's no false triggering.
- Exclusive DiaFlex® Diaphragms**
The MD1's exclusive DiaFlex® Diaphragms will last the life of the pump, guaranteed.
- Innovative manifold design**
Allows for multiple configuration possibilities. Suction and discharge ports can be positioned on the left and right side of the pump.

Simplified I/O connections



- IP67 rated M12 connection ports**
Quick and reliable connection even in confined spaces. Protects against dust, moisture, and changes in temperature.
- USB-C connection port**
Download the latest firmware in the field, saving time while ensuring optimum performance.

CHEM-FEED[®] MD1

The MD1 delivers smooth, continuous chemical feed even when injecting chemicals that off-gas. Remote control signal options include Remote Start/Stop, Flow Verification, and 4-20mA. Safety features include built-in leak detection and a lockout feature that prevents tampering - patent pending.



Technical Overview

GPH	.0008 - 8.5	Enclosure Rating	NEMA 4X (IP66)
LPH	.0032 - 32.2	Standards	cETLus, CE, NSF61
PSI	Up to 150	Power Supply	100 to 240VAC-50/60Hz
Bar	Up to 10.3	Warranty	5 years

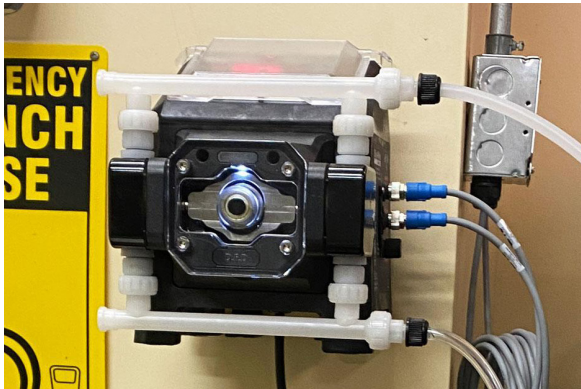
Features

Benefits of Multi-Diaphragm Technology:

- Allows for smooth, nearly pulse-less chemical feed
- Self-priming – ideal for intermittent pumping operations
- Minimizes chance of vapor lock or losing prime
- Capable of achieving 20 feet of suction lift

Communication & Interface:

- Remote Start/Stop: Non-powered dry contact closure
- Relay outputs include single 250V / 3A and single solid-state
- Compatible with Flow Verification Sensor system
- Scalable 4-20mA SCADA input
- 4-20 mA output



Exclusive DiaFlex[®] PVDF Diaphragms

Innovative design for a longer lasting diaphragm

Blue-White's exclusive DiaFlex[®] High-Performance Diaphragm is constructed of PVDF for exceptional chemical compatibility and is manufactured 100% in-house. DiaFlex[®] incorporates an innovative single-layer design resulting in zero breakdown or delamination, virtually eliminating field maintenance and downtime.

Guaranteed to last the life of the pump

DiaFlex[®] comes standard on every CHEM-FEED[®] MD1 and is guaranteed to last the life of the pump. Blue-White will replace a damaged diaphragm at no cost to the customer, provided the pump was, at all times, operated within the guidelines included in the pump's operation manual.



Premium accessories to complete your system

STAR III® Chemical Tanks

STAR III® Chemical Tanks are made from natural polyethylene and UV inhibitors and will securely mount your chemical metering pump for easy access. All necessary accessories are included.

- KIT STAR-3 7 Gallon Tank
- KIT STAR-3 15 Gallon Tank
- KIT STAR-3 30 Gallon Tank



Quick Disconnect Fittings

Safely and quickly disconnect your pump with Blue-White's Quick Disconnect Fittings. The red discharge fitting has an automatic check valve, preventing chemical backflow. The white suction fitting functions as a check valve when tubing is detached, preventing loss of prime and spills during routine maintenance.

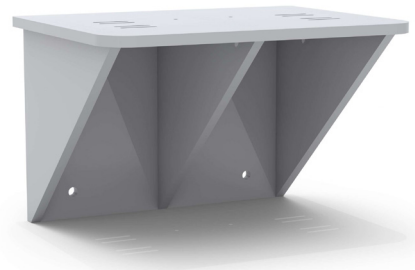
- KIT-CQA Quick Disconnect CD1 AFLAS
- KIT-CQE Quick Disconnect CD1 EP



Wall Mount Kit

Mount your pump at a convenient height to improve ergonomics. The wall mount kit comes with a tough, chemical resistant high-density polyethylene bracket and four concrete wall anchors.

- KIT-PSM



M12 Connection Cables

Compatible with Blue-White's CHEM-FEED® MD1, our M12 connection cables offer fast and easy connections even in challenging conditions. Their IP67 rating means they're protected against dust, moisture, and changes in temperature.

- KIT-M12 M12 Cable Assembly, 10 ft, Qty 2
- KIT-M12-2-15 M12 Cable Assembly, 15 ft, Qty 2
- KIT-M12-2-30 M12 Cable Assembly, 30 ft, Qty 2
- KIT-M12-3 M12 Cable Assembly, 10 ft, Qty 3
- KIT-M12-3-15 M12 Cable Assembly, 15 ft, Qty 3
- KIT-M12-3-30 M12 Cable Assembly, 30 ft, Qty 3

