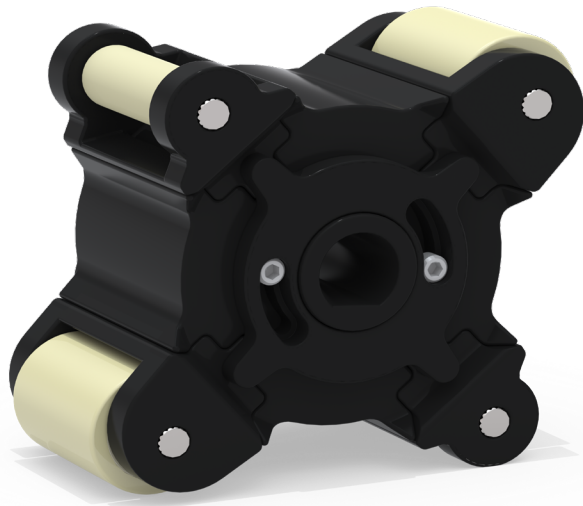


**WE ARE SIMPLIFYING TUBE REPLACEMENT**  
with new and improved A3 and M3 roller assemblies



NEW modular roller assemblies are shipping with A3 and M3 pumps!

- No change in ordering!
- No change to flow rates!
- Seamlessly replaces “old” style!



Scan QR Code for more information and video demonstration.

**Benefits include:**

**Lower cost of ownership**



Rollers can be replaced individually, eliminating the need to purchase an entire roller assembly.

**Ease of maintenance**



New roller assembly design allows for safer and easier tube replacement, without the need for a tube installation tool.

**Enhanced flexibility**



Switch to different tube assemblies without the need for changing the roller assembly.

## Old Roller Assembly vs. New Roller Assembly



Old Roller



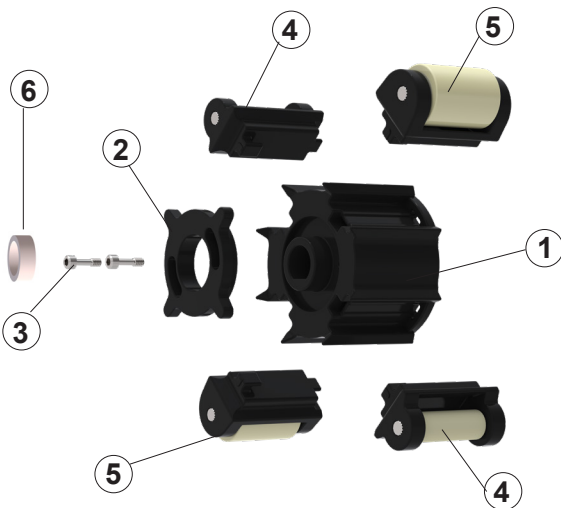
New Roller\*

\*Note: New roller requires front spacer (76010-177), included with roller shipment.

## Roller Catalog Numbers

Tube Compatibility	Roller Catalog Number
NGG / NH / NJ / NK / NHL / NEE / TK	A3-SNGG-R
TH / NKL	A3-STH-R
ND / NF	A3-SND-R
GE / GG / GH / GK / G2G	A3-SGE-R

## Roller Component Part Numbers



No.	Description	Part Number	Qty
1	Rotor Body*	N/A	1
2	Spider Ring*	90002-749	1
3	10-32 Captive Screw*	90002-339	2
	*Rotor Assy (Includes 1,2,3,6)	A3-SXX-RB	
4	Arm Roller Guide Assy A3 M3	71010-960	2
5	Arm Roller - NGG / NH / NJ / NK / NHL / NEE / TK	71010-956	2
5	Arm Roller - TH / NKL	71010-957	2
5	Arm Roller - ND / NF	71010-958	2
5	Arm Roller - GE / GG / GH / GK / G2G	71010-959	2
6	Front Spacer*	76010-177	1

P.N. 80000-195 3-Series Roller Guide Rev 2 20240830