

Flowmeter Sensor Installation Instructions

F-300S

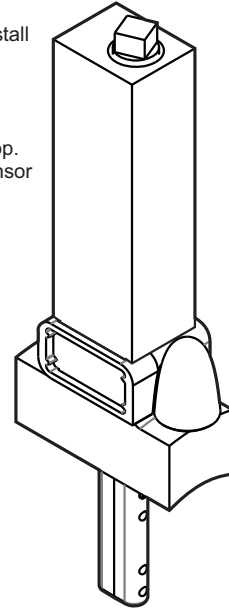
SKU: 71010-349

New F-300 requires a yellow float to work with optional flow switch / flow rate sensor.



For Flow Switch to function properly, the yellow float provided must be installed with the meter. Please proceed with the following steps to install the meter:

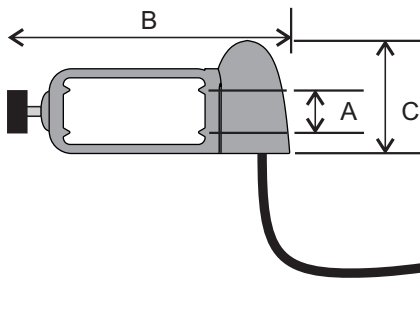
1. Remove the red cap from the top of the meter.
2. Remove the red float from the meter body.
3. Place the yellow float into the body with the larger diameter at the top.
4. Thread the red cap on to the top of the meter and place the flow sensor at your desired setpoint (see section 4).



1. Specifications

Voltage	100 VAC or VDC Abs. Max.
Current	0.250 Amp AC/DC Abs. Max.
Power	5 Watts Max.
Contact Configuration	N.O.
Form	A, SPST
Housing Material	PVDF, Black
Lead type	Red & Black, #24 Gage, 5 feet

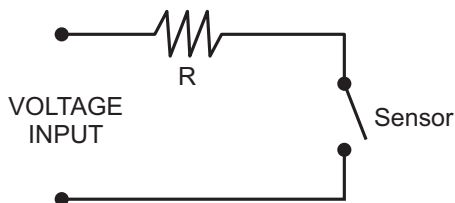
2. Dimensions



Approx. trigger range:
Contact will trigger (close) when magnetic float present (within range A).

A	0.26" (6.6mm)
B	2.8" (71mm)
C	1.3" (33mm)

3. Circuit Diagram



High surge currents may cause damage to the sensor and significantly reduce its life, the following circuit is, therefore, highly recommended.

VOLTAGE @ Max AMP. (V)	Minimum R (OHM) ± 20%
30 DC/AC @ .033 AMP.	1000
24 DC/AC @ .040 AMP.	680
12 DC/AC @ .083 AMP.	150
6 DC/AC @ .166 AMP.	36
4 DC/AC @ .250 AMP.	16

4. Installation

Lock Screw (Thumb Screw) should be loosened (counter clockwise) so the sensor can slide with ease over the top of the F-300 flowmeter. Slide to desired location on flowmeter body. Secure with Lock Screw by tightening (rotate clockwise).

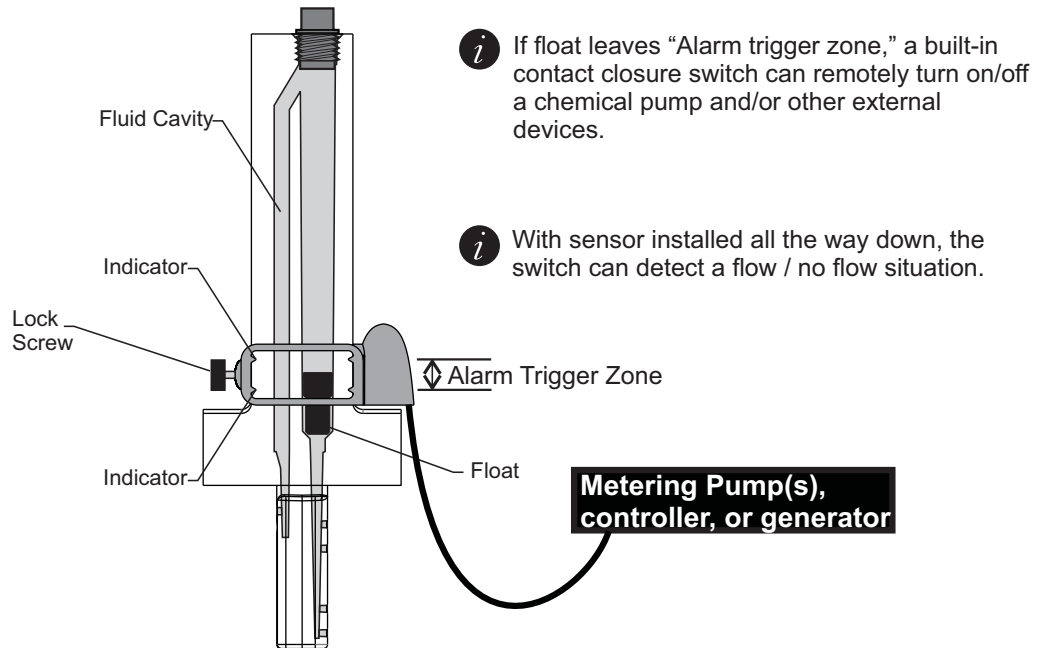
Sensor contact is **closed** when top of float is inside the Alarm Trigger Zone (Hysteresis)

Sensor contact is **open** when top of float is outside of the Alarm Trigger Zone

4.1) Flow Switch: See *Figure 1*

4.1) Flow Rate: See *Figure 2*

Flow Switch *Figure 1*



Flow Rate *Figure 2*

