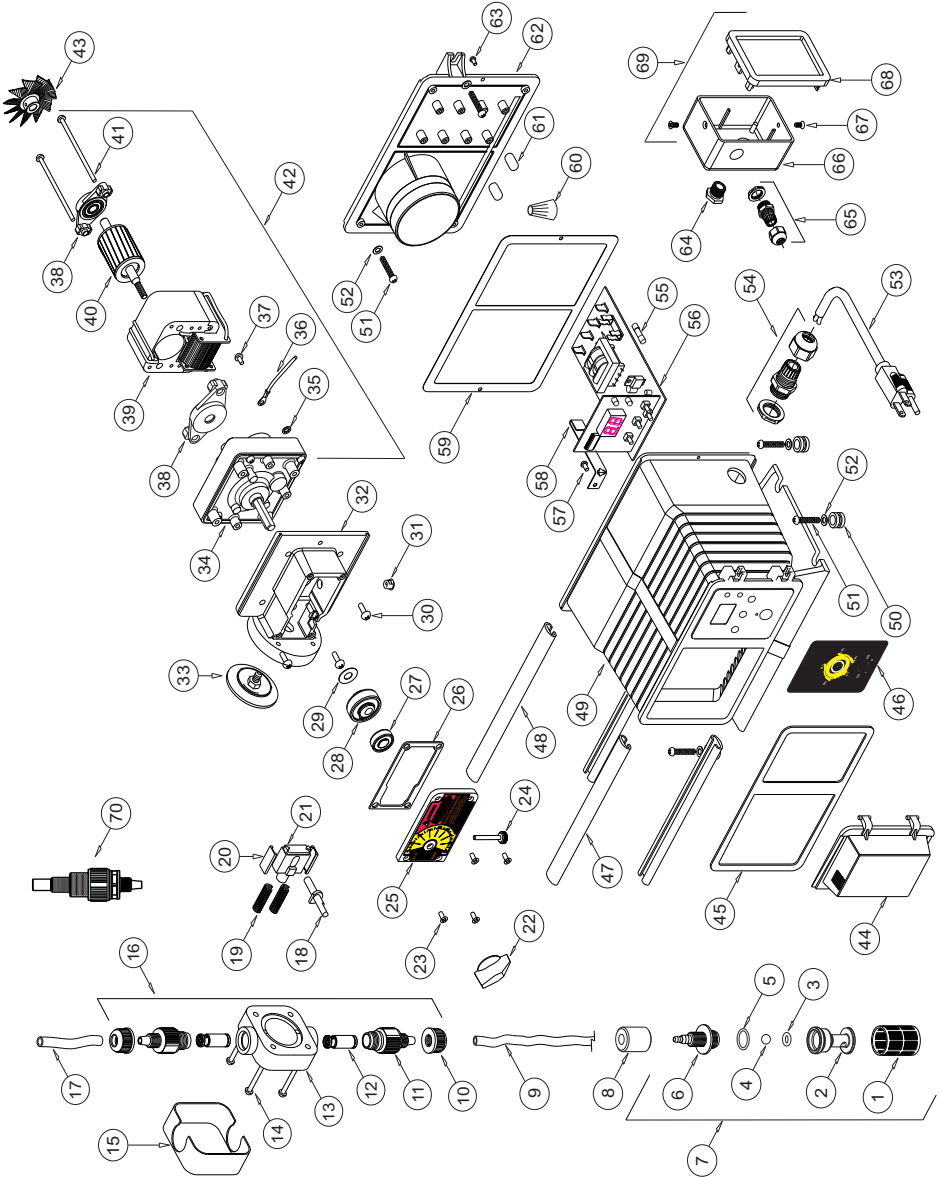


REPLACEMENT PARTS DRAWING



REPLACEMENT PARTS LIST

Item	Part No	Description	Qty	Item	Part No	Description	Qty	Item	Part No	Description	Qty
1	90002-086	Screen, Foot Valve, P.P.	1	32	76001-183	Motor Mount, Large Dia	1	76001-035	Enclosure, J-box model	1	
2	90002-214	Body, Foot Valve, PVDF	1	33	70000-683	Diaph. S/A 2.0 1.5N, Vit/TFE	1	90003-559	Mounting Feet, Rubber	4	
3	2-108A	O-ring Seat, Foot Valve, Aflas	1	34	70000-682	Diaph. S/A 2.0 1.5N, EP/TFE	1	90011-091	Screw, #10 X 1.0" Phl ST	6	
4	90003-129	O-ring Seat, Foot Valve, E.P.	1	35	71000-357	Gearbox, 14 RPM	1	90010-110	Washer, #10 Stainless	6	
5	90008-062	Ball, Foot Valve, Ceramic	1	36	71000-358	Gearbox, 40 RPM	1	90010-196	Power Cord, 115v60	1	
6	90003-014	O-ring, Foot Valve, Viton	1	37	71000-359	Gearbox, 45 RPM	1	90010-196	Power Cord, 220v50	1	
7	90003-015	O-ring, Foot Valve, E.P.	1	38	71000-360	Gearbox, 60 RPM	1	90010133	Power Cord, 230v60	1	
8	90002-215	Adapter, Foot Valve, PVDF	1	39	71000-361	Gearbox, 60 RPM	1	70000-589	Connector Liq-tite w/ nut .375	1	
9	71000-324	Foot Valve S/A, C-340E, EP	1	40	71000-362	Gearbox, 125 RPM	1	A-023N-B	Timer 5 sec. Model A	1	
10	71000-325	Foot Valve S/A, C-340A, Aflas	1	41	90011-078	Washer, #8 Intrl/Star	1	A-023N-H	Timer 5 sec. Model C	1	
11	90008-068	Ceramic weight, C-346	1	42	90010-222	Lead Wire, ground, Green	1	C-1817N-1	Speed control 115V model F	1	
12	90008-116	Tubing Suction 3/8 x 5 FT	1	43	90011-024	Screw 8-32 x 2.5" Hex SL ST	1	C-1817N-4	Speed control 220V model F	1	
13	90002-077	Tube Nut, 3/71, PVDF	2	44	71000-028	Bearing Bracket With Bearing	2	C-1817N-5	Speed control 230V model F	1	
14	71000-204	Adapter S/A Bullet, 3/71 Vit	1	45	71000-211	Stator 115V Blue-Wh/Yell	1	90011-146	Screw, 8-32 X .25 Phl Pan F	1	
15	71000-205	Adapter S/A Bullet, 3/71 EP	1	46	71000-212	Stator 220V Brown-Wh/Yell	1	90006-583	Motor Retaining Clip, Ss	1	
16	71000-224	Adapter S/A Bullet, 3/71 Sil	2	47	71000-213	Stator 230V Red-White/Yellow	1	90006-580	Gasket, Back, Neoprene	1	
17	71000-195	Cartridge Valve S/A, D-Ball	2	48	70002-207	Rotor With Shaft And Spacers	1	90010-036	Wire Nut, Blue	2	
18	90002-146	P/Head Noir Molded, P.P.	2	49	70002-206	Screw, 8-32 x 2.5" Phl Steel	2	90002-192	Enclosure Back Plate, Valox	1	
19	70004-074	Cover P/Head, HD logo	4	50	70002-204	Gearmotor, 14 Rpm, 115v60	1	90011-044	Screw 6-32 x .37 Swag Form	1	
20	70001-149	Kit P/Head HDN 3/71 V, P-P	1	51	70002-205	Gearmotor, 30 Rpm, 115v60	1	90007-515	Bushing, J-Box Conn, Alum.	1	
21	70001-153	Kit P/Head HDN 3/71 E.P, P-P	1	52	70002-206	Gearmotor, 45 Rpm, 115v60	1	90008-199	Connector Liq-tite w/ nut .187	1	
22	76000-374	Tubing D/Charge, 3/8 x 10 FT	1	53	70002-212	Gearmotor, 60 Rpm, 115v60	1	76001-168	J-Box, Ext. Input, Valox	1	
23	90001-132	Offset Cam #1, 1.25"	1	54	70002-213	Gearmotor, 60 Rpm, 220v50	1	90011-129	Screw, 6-32 X .25 Phl SS	2	
24	90001-133	Offset Cam #2, .058"	1	55	70002-214	Gearmotor, 125 Rpm, 220v50	1	71000-133	Cover, J-Box w/Gasket, Label	1	
25	90001-134	Offset Cam #3, 1.87"	1	56	70002-216	Gearmotor, 250 Rpm, 220v50	1	70000-364	J-Box Assembly, Ext. Input	1	
26	90001-141	Offset Cam #4, 1.00"	1	57	70002-217	Gearmotor, 14 Rpm, 230v60	1	C-395N-6A	Inj. Valve .5-.25 MpaX.37od T	1	
27	90006-006	Return Spring	2	58	70002-218	Gearmotor, 30 Rpm, 220v50	1				
28	76000-172	Stair-up	2	59	70002-219	Gearmotor, 45 Rpm, 230v60	1				
29	90002-017	Dial Knob	1	60	70002-220	Gearmotor, 60 Rpm, 230v60	1				
30	90011-168	Screw #6 x .62 PH oval 'A'	4	61	70002-221	Gearmotor, 125 Rpm, 230v60	1				
31	90011-121	Thumb Screw 6-32 x 1.125	1	62	90006-581	Fan, Motor, 2.25" Dia, Alum	1				
32	71000-363	Cover Cam S/A C-1100	1	63	90006-579	Gasket, Front, Neoprene	1				
33	90006-597	Gasket, Top Cover	1	64	90012-224	Label blank (model X)	1				
34	90004-005	Bearing, Top Cover	1	65	90012-225	Label blank (model X)	1				
35	90012-218	Label, Cam Cover	1	66	76000-999	Slide Clamp, Encl Front	2				
36	70000-131	Drive Cam S/A #1, 1.25"	1	67	76001-000	Slide Clamp, Encl Rear	2				
37	70000-133	Drive Cam S/A #2, .055"	1	68	90002-190	Enclosure, P/cord model 1	1				
38	70000-132	Drive Cam S/A #3, 1.87"	1								
39	70000-722	Drive Cam S/A #4, 1.00"	1								
40	90011-014	Spacer, Rotor	1								
41	90011-122	Screw 10-32 x .50 PHL PAN	4								
42	90008-138	Plug, 3/12 Hole Black	1								