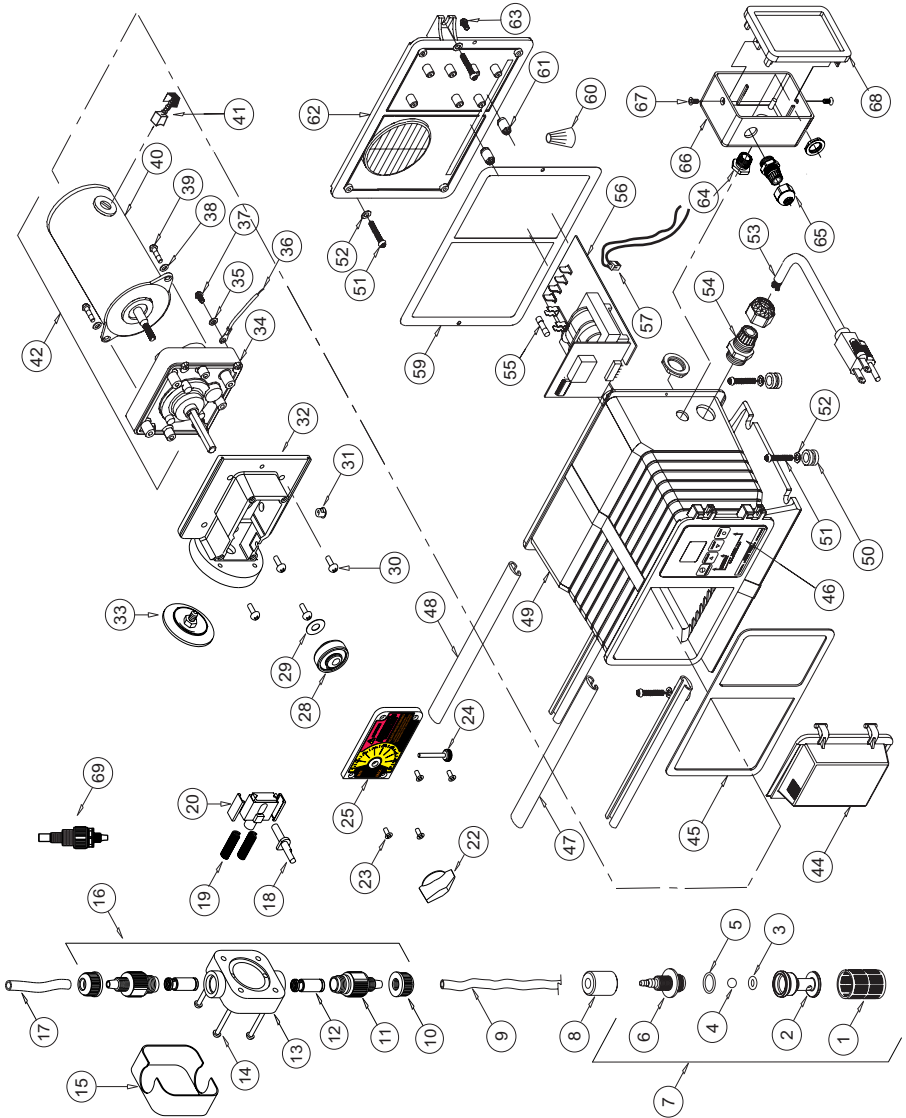


Replacement Parts Drawing



PARTS LIST

Item	Part No	Description	Qty	Item	Part No	Description	Qty
1	C-345S	Screen, FootValve, P.P.	1	C-618N-45	Gearbox, 45 RPM	1	
2	90002-214	Body, FootValve, PVDF	1	C-618N-60	Gearbox, 60 RPM	1	
3	2-108A	O-ring, FootValve, Aflas	1	C-618N-125	Gearbox, 125 RPM	1	
	2-108E	O-ring, FootValve, E.P.	1	C-618N-250	Gearbox, 250 RPM	1	
4	C-385C	Ball, FootValve, Ceramic	1	35	90011-078	Washer, Ground, #8 Star	1
5	90003-014	O-ring, FootValve, Viton	1	36	90010-222	Lead Wire, ground, Green	1
	90003-015	O-ring, FootValve, E.P.	1	37	90011-024	Screw 8-32 x .25 SL ST	1
6	90002-215	Adapter, FootValve, PVDF	1	38	90011-074	Washer, #8 split-lock	2
7	C-340E	FootValve, C-340E, EP	1	39	90011-023	Screw, motor, 8-32 x .50	2
	C-340A	FootValve, C-340V, Vit/Aflas	1	40	90010-244	Motor, 24V DC	1
8	C-346	Ceramic weight, C-346	1	41	C-1814N-4	Brush kit, (2 pc.) 24V DC	1
9	C-334-6	Tubing Suction 3/8 x 5 FT	1	42	70002-255	G/motor, 14 Rpm, 24VDC	1
10	C-330-6	Tube Nut, .37T, PVDF	2		70002-256	G/motor, 30 Rpm, 24VDC	1
11	C-560-6V	Adapter S/A .37T Viton	2		70002-257	G/motor, 45 Rpm, 24VDC	1
	C-560-6E	Adapter S/A .37T EP	2		70002-258	G/motor, 60 Rpm, 24VDC	1
	C-560-6S	Adapter S/A .37T Sil	2		70002-259	G/motor, 125 Rpm, 24VDC	1
12	K-568-4A	Cartridge Valve S/A	2		70002-260	G/motor, 250 Rpm, 24VDC	1
13	C-535	P/Head Noir Molded, P.P.	1	44	90002-191	Door, Controls Cover	1
14	C-504HD	Screw 10-32 x 1.25	4	45	90006-579	Gasket, Front, Neoprene	1
15	C-535FC	Cover P/Head,	1	46	90012-245	Label Timer w/ Ext. Input	1
16	C-535A6-6	Kit P/Head, 37T Vit/Afl, P-P	1	47	76000-999	Slide Clamp, Front	2
	C-535A6-6E	Kit P/Head, 37T E.P. P-P	1	48	76001-000	Slide Clamp, Rear	2
17	C-334-6-10	Tubing D/Charge, 3/8 x 10'	1	49	76001-253	Enclosure, w/ Ext. Input	1
18	C-1505N	Offset Cam #1 .125"	1	50	90003-559	Mounting Feet, Rubber	4
	R-1505N	Offset Cam #2 .055"	1	51	90011-091	Screw, #10 X 1.0" Phil	6
	C-1505N-3	Offset Cam #3 .187"	1	52	90011-094	Washer, #10 Stainless	6
	C-1505N-4	Offset Cam #4 .100"	1	53	71000-175	Power Cord, 220v50hz,	1
19	C-1514N	Return Spring	2		71000-177	Power Cord, 230v60hz,	1
20	C-1513N	Stirrup with slide bearings	1	54	70000-589	Connector Liq-tite .375	1
22	C-1502	Dial Knob	1	55	90010-235	Fuse, 1A, 250VAC	1
23	90011-168	Screw #6 x .62 PH oval 'A'	4	56	A-023N-V-115	Circuit board, 115V	1
24	C-1519N	Thumb Screw 6-32 x 1.125	1		A-023N-V-230	Circuit board, 220V/230V	1
25	71000-363	Cover Cam S/A C-1100	1	57	90010-246	Wire set w/plug, alarm relay	1
28	C-1507A	Drive Cam S/A #1 .125"	1	59	90006-580	Gasket, Back Plate	1
	R-1507A	Drive Cam S/A #2 .055"	1	60	90010-036	Wire Nut, Blue	2
	C-1507-3A	Drive Cam S/A #3 .187"	1	62	71000-489	Enclosure Back w/Gasket	1
	C-1507-4A	Drive Cam S/A #4 .100"	1	63	90011-044	Screw 6-32 x .37	2
29	A-031	Spacer, Rotor	1	64	90007-515	Bushing, J-Box, Alum.	1
30	C-624N	Screw 10-32 x .50 PHL	4	65	90008-199	Connector Liq-tite .187	1
31	90008-138	Plug .312 Hole Black	1	66	76001-254	Junction Box, Input, Valox	1
32	76001-183	Motor Mount, Large Dia	1	67	90011-129	Screw, 6-32 X .25 SS	2
33	C-406VT-15N	Diaphragm 2.0 Vit/TFE	1	68	71000-133	Cover, J-Box w/Gasket,	1
	C-406T-15N	Diaphragm 2.0 EP/TFE	1	69	A-014N-6A	Inj. Valve .37od, 1/2 lb spring	1
34	C-618N-14	Gearbox, 14 RPM	1		C-395N-6A	Inj. Valve .37od, 6lb spring	1
	C-618N-30	Gearbox, 30 RPM	1				