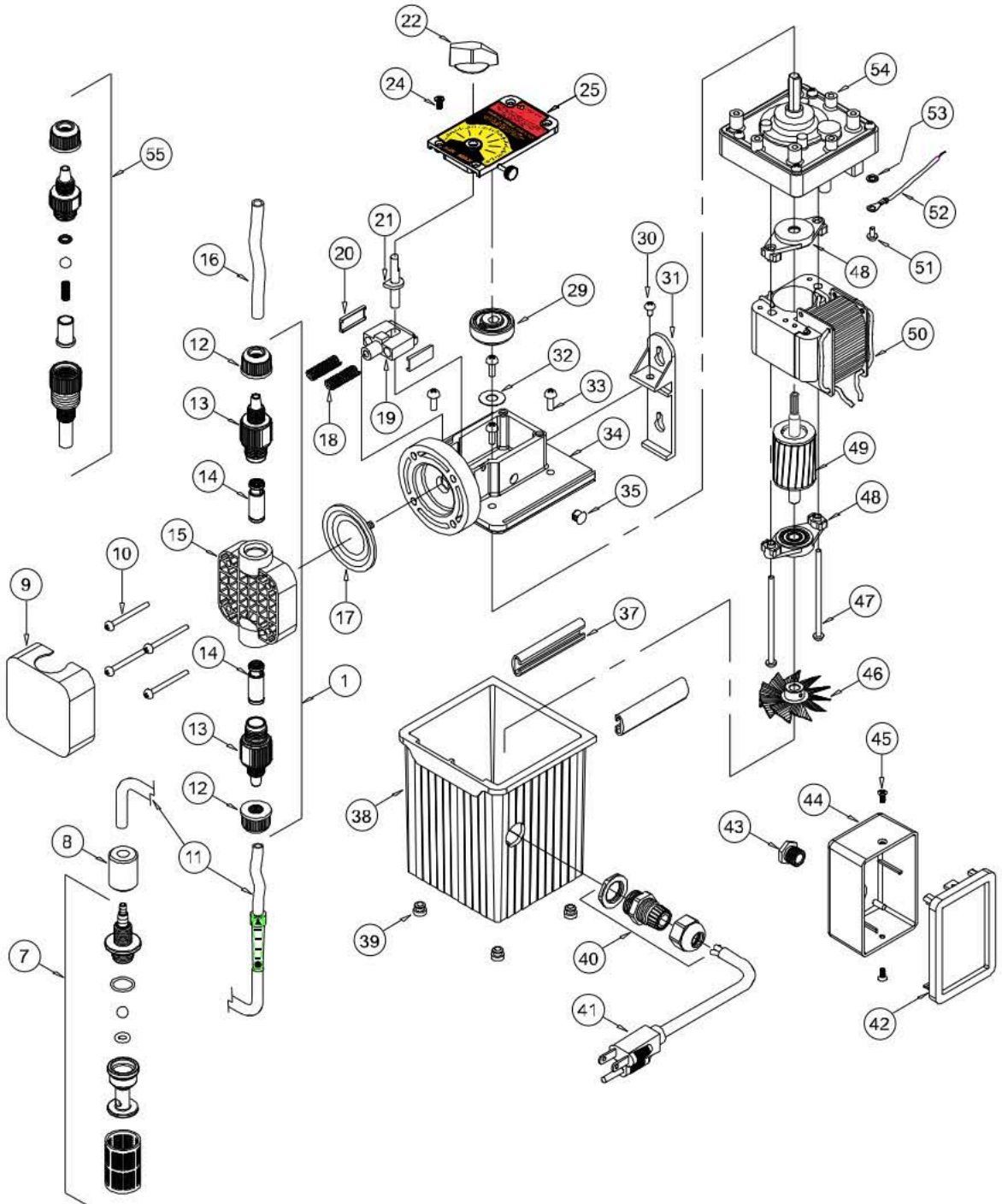


Replacement Parts Drawing



C-1500N PARTS LIST

<u>Item</u>	<u>Part No</u>	<u>Description</u>	<u>Qty</u>
1	C-535A6-6	Pumphead Kit, HDN Viton	1
	C-535A6-6E	Pumphead Kit, HDN EP	1
7	C-340A	FootValve S/A, Aflas	1
	C-340E	FootValve S/A, EP	1
8	C-346	Ceramic weight	1
9	C-535FC	Cover P/Head, HD Chem-Feed logo	1
	C-535F	Cover P/Head, HD Noir logo	1
	S-535F	Cover P/Head, HD Micro logo	1
10	C-504HD	Screw 10-32 x 1.25	4
11	70000-638	Tube Indicator Glass 3/8 x 5FT	1
	C-334-4	Tube Suction 1/4 x 5FT	1
12	C-330-4	Tube Nut, .25T, PVDF	2
	C-330-6	Tube Nut, .37T, PVDF	2
13	C-560-6V	Adapter S/A Bullet .37T Viton	2
	C-560-6E	Adapter S/A Bullet .37T EP	2
	C-560-6S	Adapter S/A Bullet .37T Silicon	2
	C-560-4V	Adapter S/A Bullet .25T Viton	2
	C-560-4E	Adapter S/A Bullet .25T EP	2
	71000-227	Adapter S/A Bullet .25T Silicon	2
14	71000-195	Cartridge Bullet Valve S/A, Double-Ball	2
15	90002-146	P/Head Noir Molded, P.P.	1
16	C-335-6	Tubing D/Charge, 3/8 x 5FT	1
	C-335-4	Tubing D/Charge, 1/4 x 5FT.	1
17	C-406VT-15N	Diaphragm S/A 2.0 15N, Viton/TFE	1
	C-406T-15N	Diaphragm S/A 2.0 15N, EP/TFE	1
	R-106VT-15N	Diaphragm S/A 1.6 15N, Viton/TFE	1
	R-106T-15N	Diaphragm S/A 1.6 15N, EP/TFE	1
18	C-1514N	Return Spring	2
19	76000-172	Stirrup	1
20	C-1504	Slide Bearing	2
21	90001-132	Offset Cam #1 .125"	1
	R-1505N	Offset Cam #2 .055"	1
	C-1505N-3	Offset Cam #3 .187"	1
	90001-141	Offset Cam #4 .100"	1
22	C-1502	Dial Knob	1
24	90011-168	Screw #6 x .62 PH oval 'A'	4
25	C-1503N-3	Top Cover Assembly with bearing	1
29	C-1507A	Drive Cam S/A #1 .125"	1
	R-1507A	Drive Cam S/A #2 .055"	1
	C-1507-3A	Drive Cam S/A #3 .187"	1
	C-1507-4A	Drive Cam S/A #4 .100"	1

<u>Item</u>	<u>Part No</u>	<u>Description</u>	<u>Qty</u>
30	C-624N	Screw 10-32 x .50 PHL PAN	1
31	90002-106	Bracket Wall Mount	1
32	90011-014	Spacer, Rotor	1
33	C-624N	Screw 10-32 x .50 PHL PAN	4
34	C-1501N	Motor Mount, Large Diaphragm	1
	C-1501N-S	Motor Mount, Small Diaphragm	1
35	90008-138	Plug .312 Hole Black	1
36	90006-597	Gasket, Motor Mount	1
37	C-628NG	Slide Clamp	2
38	C-1501NR	Motor Cover for power cord models	1
	C-1508PN-2	Motor cover for junction box models	1
39	C-1517	Bumper Feet	4
40	A-033N	Connector Liq-Tite w/nut	1
41	C-1523UL	Cord 18/3 SJTW/A 115V, U.S., NEMA 5/15 plug	1
	90010-128	Cord 18/3 SJTW/A 220V, Euro, CEE 7/VII (A) plug	1
	C-823-230	Cord 18/3 SJTW/A 230V, U.S., NEMA 6/15 plug	1
42	C-052	Cover, Junction Box with Gasket and Label	1
43	C-649	Bushing, Junction Box Connector, Alum.	1
44	76000-522	Junction Box, Valox	1
45	F-7013	Screw, Cover, 6-32 X .25 Phil Pan SS Black	2
46	90006-598	Fan, 1.80" Diameter, Alum.	1
47	C-625	Screw, Motor, 8-32 X 2.5" Phillips Steel	2
48	C-612PB	Bearing Bracket With Bearing	2
49	C-616PN	Rotor Assembly With Shaft And Spacers	1
50	70000-018	Stator S/A, 115V60Hz Standard Blue-Black	1
	70000-019	Stator S/A, 115V60Hz Thermal Brown-Blue	1
	71000-019	Stator S/A, 220V50Hz Standard Brown-Black	1
	71000-020	Stator S/A, 220V50Hz Thermal Brown-Yellow	1
	70000-020	Stator S/A, 230V60Hz Standard Red-Black	1
	70000-021	Stator S/A, 230V60Hz Thermal Red-Yellow	1
	C-615P-4	Stator S/A, 24V60Hz Standard Blue-White	1
51	90011-024	Ground Screw 8-32 x .25 Hex SL ST	1
52	90010-127	Lead Wire, ground, Green	1
53	90011-078	Washer, Ground Screw, #8 Intrl/Star	1
54	C-618N-14	Gearbox, 14 RPM	1
	C-618N-30	Gearbox, 30 RPM	1
	C-618N-45	Gearbox, 45 RPM	1
	C-618N-60	Gearbox, 60 RPM	1
	C-618N-125	Gearbox, 125 RPM	1
	C-618N-250	Gearbox, 250 RPM	1
55	70000-439	Injection Valve S/A 37T VIT 1/2 PSI	1
(N/s)	90010-153	Cycle Timer 5 Sec. 24V-115V-230V 50/60 Hz	1
(N/s)	90010-151	Cycle Timer 1 Min. 24V-115V-230V 50/60 Hz	1