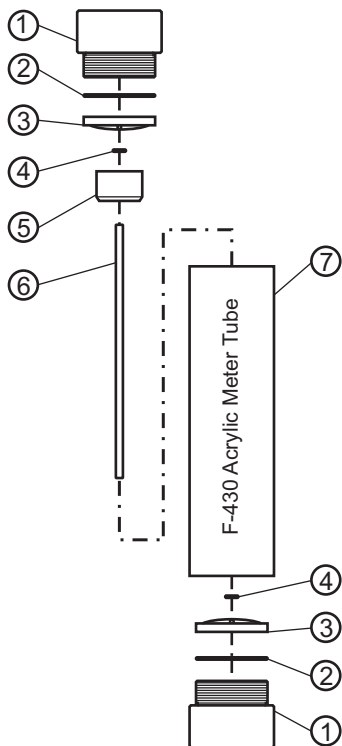


EXPLODED VIEW, PARTS LIST AND SPECS

EXPLODED VIEW



PARTS LIST

Item	Catalog No.	Description	Qty
1	76001-226	1.5" male NPT adapter (PVC)	2
1	76001-216	2" male NPT adapter (PVC)	2
2	90003-118	O-ring (Viton)**	2
3	91001-198	Wire Holder (PSF)	2
4	90003-140	O-ring (Aflas)**	2
5	-	Float (SS)*	1
6	76001-229	Guidewire (SS)*	1
7	-	Meterbody (Acrylic)	1

Shading indicates item not sold separately

*Hastelloy C-276 Option Available

**EP Option Available

PSF= polysulfone

SS = # 316 Stainless Steel

PVC = Polyvinyl chloride

METER SPECS

Scale	Permanent dual scale silkscreen
Max Pressure	See Temperature vs. Pressure chart*
Max Temperature	See Temperature vs. Pressure chart*
Height	14" (355.6 mm)
Width	3" (76.2 mm)
Accuracy	± 5% of full scale reading

APPLICATION NOTES

Although meters may be suitable for other chemicals, Blue-White cannot guarantee their suitability. It is the responsibility of the user to determine the suitability of the flowmeter in their application. **Flowmeters are tested and calibrated for water only.**

MAINTENANCE

The "Exploded View" drawing illustrates assembly of the F-451N series meter. If your flowmeter needs to be cleaned refer to this drawing when reassembling the unit. The tapered tube may be cleaned with a soft bottle brush. Use a MILD soap and water solution for cleaning purposes. Note the float's "up" position.