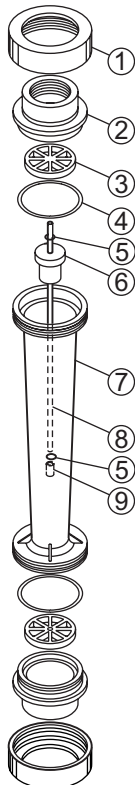


## EXPLODED VIEW, PARTS LIST AND SPECS

### EXPLODED VIEW



### PARTS LIST

Item	Catalog	Description	Qty
1	F-45038N	Union Nut	2
2	F-45030N F-45036	Adapter, vertical, 1" F/NPT (PSF) Adapter, vertical, 1-1/2" M/NPT (PVC)	2
3	F-45025 F-45025-2	Wireholder 1-10, 2-20 (PSF) LG Wireholder 3-30, 4-40 (PSF)	2
4	2-136V	O-Ring 2-136 (Viton)**	1
5	2-006A 2-008V	Float Stop .5-6, 1-10, 2-20 (Aflas) Large Float Stop, 3-30, 4-40 (Aflas)	1
6	-	Float (SS)*	1
7	-	Meterbody (PSF)	1
8	F-45028 F-450028-2	Guide Wire, .5-6, 1-10, 2-20, (SS)* Guide Wire, 3-30, 4-40 (SS)*	1
9	F-45046 F-45054	Wireholder, .5-6, 1-10, 2-20 (PSF) Wireholder, 3-30, 4-40 (PSF)	1

*Shading indicates item not sold separately*

\*Hastelloy C-276 Option Available

\*\*EP Option Available

PSF= polysulfone

SS = # 316 Stainless Steel

PP = polypropylene

PVC = Polyvinyl chloride

### METER SPECS

<b>Scale</b>	Permanent dual scale silkscreen
<b>Max Pressure</b>	See Temperature vs. Pressure chart*
<b>Max Temperature</b>	See Temperature vs. Pressure chart*
<b>Height</b>	14.5" (368mm)
<b>Width</b>	3.1875" (81mm)
<b>Accuracy</b>	± 2% of full scale reading

### APPLICATION NOTES

Although meters may be suitable for other chemicals, Blue-White cannot guarantee their suitability. It is the responsibility of the user to determine the suitability of the flowmeter in their application. **Flowmeters are tested and calibrated for water only.**

### MAINTENANCE

The "Exploded View" drawing illustrates assembly of the F-451N series meter. If your flowmeter needs to be cleaned refer to this drawing when reassembling the unit. The tapered tube may be cleaned with a soft bottle brush. Use a MILD soap and water solution for cleaning purposes. Note the float's "up" position.