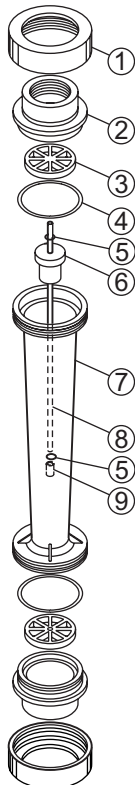


EXPLODED VIEW, PARTS LIST AND SPECS

EXPLODED VIEW



PARTS LIST

Item	Catalog Number	Description	Qty
1	F-452004N	Union Nut (Nylon)	2
2	F-452330N	2.0" FNPT Adapter (PSF)	2
3	F-452002	Wireholder (PSF)	2
4	F-452043N	O-ring (Viton)**	2
5	-	Float (SS)*	1
6	-	Meterbody (PSF)	1
7	F-452287N	Guide Wire (SS)*	1
8	F-452332	Float Stop (Polyethylene)	1

Shading indicates item not sold separately

*Hastelloy C-276 Option Available

PSF= polysulfone

**EP Option Available

SS = # 316 Stainless Steel

METER SPECS

Scale	Permanent dual scale silkscreen
Max Pressure	See Temperature vs. Pressure chart*
Max Temperature	See Temperature vs. Pressure chart*
Height	18.875" (479.4mm)
Width	4.625" (117.5mm)
Accuracy	± 2% of full scale reading

APPLICATION NOTES

Although meters may be suitable for other chemicals, Blue-White cannot guarantee their suitability. It is the responsibility of the user to determine the suitability of the flowmeter in their application. **Flowmeters are tested and calibrated for water only.**

MAINTENANCE

The "Exploded View" drawing illustrates assembly of the F-451N series meter. If your flowmeter needs to be cleaned refer to this drawing when reassembling the unit. The tapered tube may be cleaned with a soft bottle brush. Use a MILD soap and water solution for cleaning purposes. Note the float's "up" position.