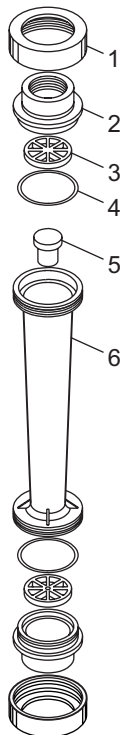


EXPLODED VIEW, PARTS LIST AND SPECS

EXPLODED VIEW



PARTS LIST

Item	Catalog Number	Description	Qty
1	76001-330	Union Nut (PVC)	2
1	90007-640	Union Nut (ALUM)	2
2	76001-260	1.0" FPT Adapter (PVC)	2
2	76001-259	1.0" FPT Adapter (PVDF)	2
3	91001-159	Float Stop (PSF)	2
4	90003-134	O-ring (Viton)*	1
5	-	Float (PTFE)	1
6	-	Body (PSF)	1

Shading indicates item not sold separately

*EP Option Available

ALUM = Aluminum
 PSF = Polysulfone
 PVC = Polyvinyl chloride
 PVDF = Polyvinylidene fluoride

METER SPECS

Scale	Permanent dual scale silkscreen
Max Pressure	See Temperature vs. Pressure chart*
Max Temperature	See Temperature vs. Pressure chart*
Height	15" (38.1 cm)
Width	2.75" (6.99 cm)
Accuracy	± 2% of full scale reading

APPLICATION NOTES

Although meters may be suitable for other chemicals, Blue-White cannot guarantee their suitability. It is the responsibility of the user to determine the suitability of the flowmeter in their application. **Flowmeters are tested and calibrated for water only.**

MAINTENANCE

The "Exploded View" drawing illustrates assembly of the F-461 series meter. If your flowmeter needs to be cleaned refer to this drawing when reassembling the unit. The tapered tube may be cleaned with a soft bottle brush. Use a MILD soap and water solution for cleaning purposes. Note the float's "up" position.