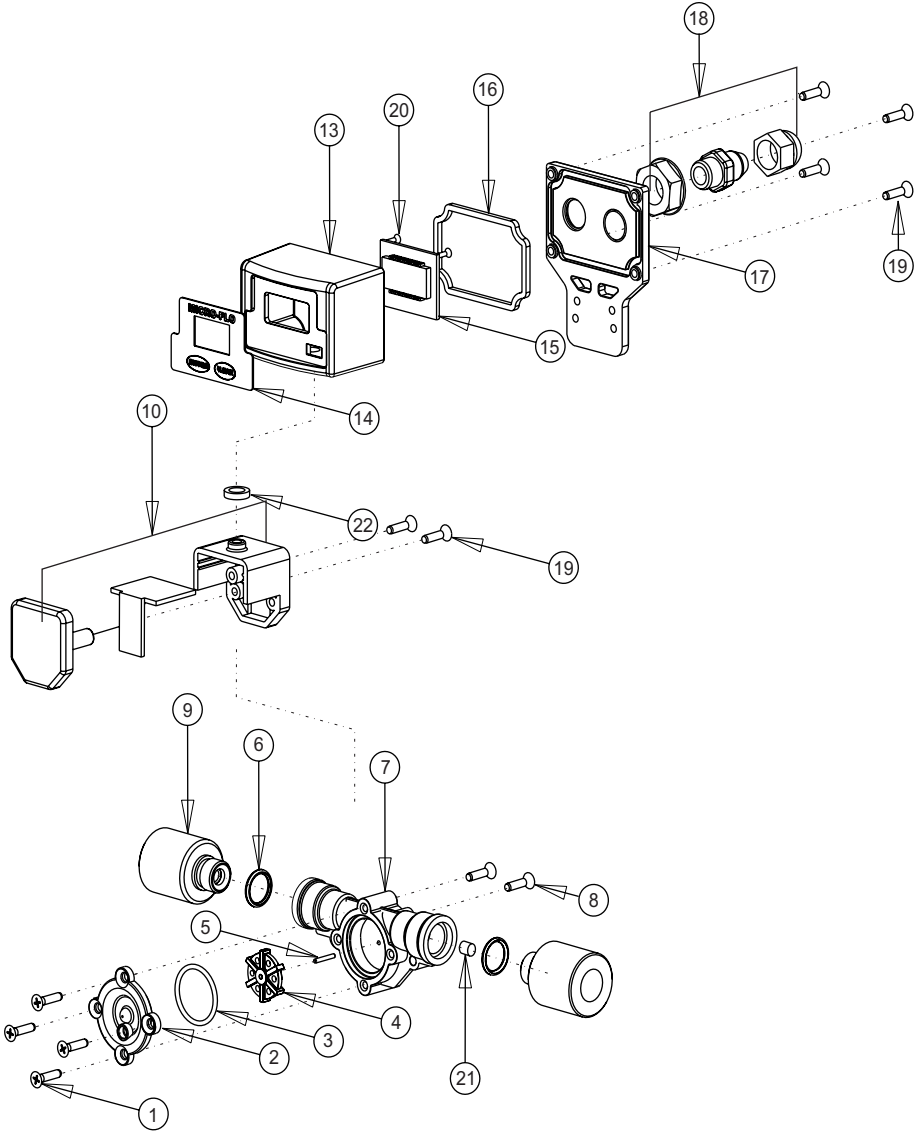


10.0 REPLACEMENT PARTS



PARTS LIST

Key	Part No.	Description	Qty.
1	90011-190	Screw 6-32x.50 Phil Flt SS	4
2	90002-228	Lens Cap Opaque PVDF	1
3	90003-143	O-Ring FKM	1
	90003-146	O-Ring EP	
4	90002-229	Paddle PVDF	1
5	90007-592	Axle PVDF	1
6	90003-012	O-Ring FKM	2
	90003-011	O-Ring EP	
7	76001-705	Body S1 PVDF (30-300ml/min)	1
	76001-301	Body S2 PVDF(100-1000ml/min)	
	76001-302	Body S3 PVDF (200-2000ml/min)	
	76001-706	Body S4 PVDF (300-3000ml/min)	
	76001-304	Body S5 PVDF (500-5000ml/min)	
	76001-305	Body S6 PVDF (700-7000ml/min)	
8	90011-178	Screw #4x.50 Phil Blk	2
9	76000-137	Adapter .250" F/NPT PVC	2
	76000-456	Adapter .125" F/NPT PVC	
	90002-038	Adapter .375" OD Tubing Connection, PVDF	
	90002-042	Adapter .250" OD Tubing Connection, PVDF	
	76001-360	Adapter .500" ID Hose Barb, PVC	
	76001-359	Adapter .500 F/NPT, PVC	
	76001-358	Adapter .500 M/NPT, PVC	
10	71010-182	Sensor	1
13	90002-242	Enclosure, Valox	1
14	90012-254	LCD display	1
15	90010-260	Circuit board	1
16	90006-604	Gasket, rear enclosure	1
17	90002-243	Cover, enclosure rear	
18	90008-199	Liquid Tight Connector Set	1
19	90011-075	Screw #4x.62 Phil SS Blk	6
20	90011-177	Screw #2x.25 L Phil St	2
21	76001-299	Tubing connector seal	1
22	90006-605	Gasket, sensor mount seal	1