


CFPS-2-M

CHEM-FEED® Plastic Duplex Skid System



Features

- > Chemically resistant polyethylene structure
- > Leak free, threadless connections
- > Pressure Relief Valve protects the system from over-pressurization
- > Check Valve protects the user from back-flow
- > Flow Indicator provides a visual indication of chemical movement

Video link: 

Highlights

Piping

PVC Schedule 80
(optional CPVC, PVDF,
and Chem Proline® PE)

Pressure

150 PSI
(10.3 bar)

Compatibility

M1, M2, M3, M4,
MD1, C2, C3, MD3

Frame material

Polyethylene

Mounting position

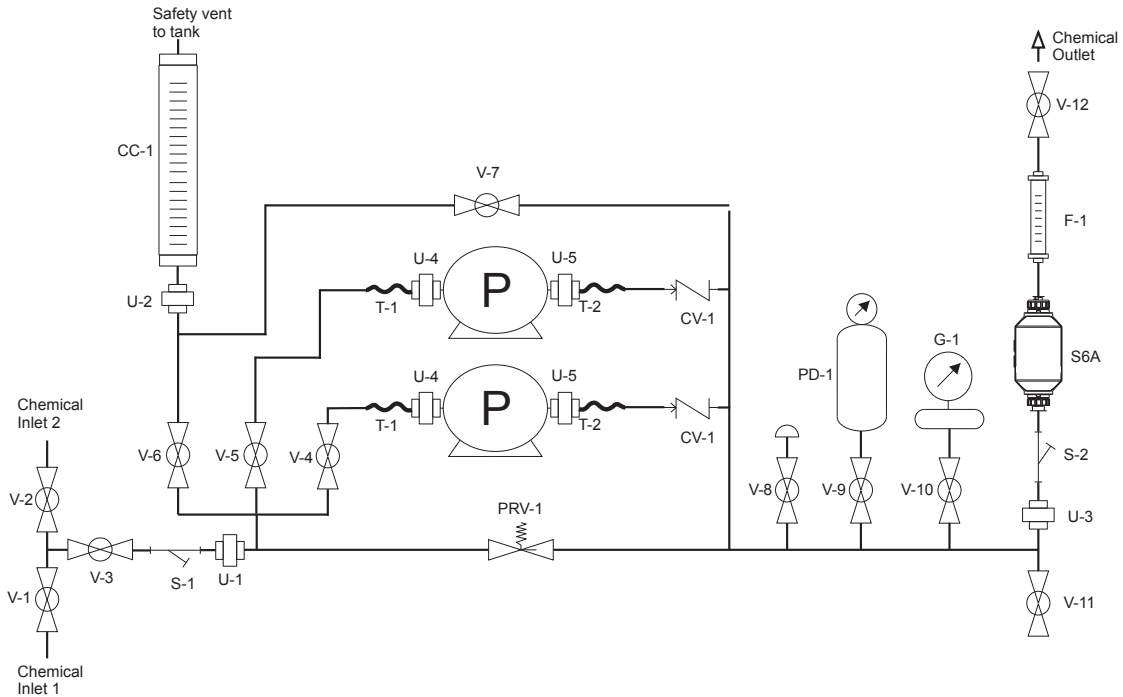
Floor or wall

Warranty

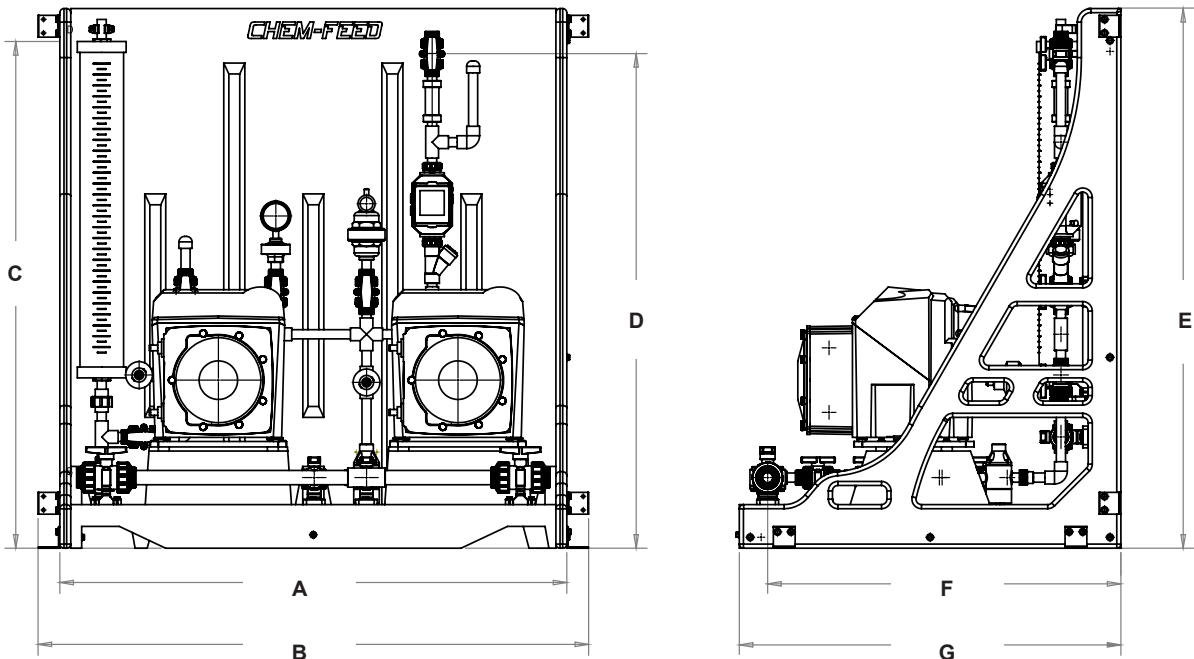
2 Years



Skid	Chemically resistant polyethylene structure
Pump (sold separately)	FLEXFLO® M1, M2, M3 or M4 peristaltic pumps
	CHEM-FEED® MD1, C2, C3 or MD3 diaphragm pumps
Piping	1" Inlet & 1/2" outlet PVC schedule 80 (optional CPVC, PVDF, Chem Proline®)
Seals	FKM seals (optional EPDM)
Tubing (T)	Reinforced braided PVC, 200 psi max, certified NSF 51 / NSF 61. The pump inlet and outlet flexible tubing connections are terminated to half unions and secured to the barbed fitting with stainless steel clamps. (Optional: 1/2" PTFE, 1/4" PE, 1/4" PTFE)
Tubing Clamps	300 series SS band, 400 series SS screw
Unions (U)	PVC body, schedule 80 (optional CPVC, PVDF)
Ball Valves (V)	True unions, Vented, PVC body, PTFE shaft bearings and seats (optional CPVC, PVDF)
Pressure Relief Valve (PRV)	PVC body, PTFE primary diaphragm seal. Non-wetted components: EPDM secondary seal, zinc plated steel spring, stainless steel external hardware, HDPE pressure adjustment screw. Infinite adjustment from 10-150 psi. (optional CPVC, PVDF)
Calibration Cylinder (CC)	PVC body, PVC end caps, 1/2" PVC pipe outlet vent Available volumes: 3 GPH (100ml), 8 GPH (250ml), 16 GPH (500ml), 32 GPH (1000ml), 64 GPH (2000ml), and 132 GPH (4000mL)
Pulsation Dampener (PD)	CPVC body, 10 cubic inch volume (optional PVDF)
Gauge W/Guard (G)	Gauge: liquid filled stainless steel with blowout plug, bottom mount, 1/4" NPT threads. Available pressure ranges: 0-30 psi, 0-100, psi, 0-200 psi. Guard: PVC body, temperature compensated oil filled. (optional CPVC, PVDF)
Check Valve (CV)	PVC body. Cracking pressure: 1.0-1.5 psi Maximum working pressure: inlet = 150 psi, back = 100 psi (optional CPVC, PVDF)
Flow Indicator (F)	Machined cast acrylic, PVC connections, ceramic ball, PVDF ball stop, PVC half unions.
Flow Sensor (MS6)	PVDF and PEEK Body. Available Flow Ranges: 10 - 5,000 ml/min, 100-10,000 ml/min
Y Strainer (S)	PVC body, 1/32" Mesh (optional CPVC, PVDF)
Pressure Switch (PSH)	316 Stainless Steel
Back-Pressure Valve (BPV)	PVC body, 0-150 PSI Range (optional CPVC, PVDF)
Universal Mounting Blocks	PA 12
Pump Extended Mounting Brackets	316 Stainless Steel
Skid Mounting Foot Pads	316 Stainless Steel
Mounting Hardware	304 Stainless Steel - Wall or Floor mounting acceptable
Maximum Working Pressure	150 psig (10.3 bar)
Operating Temperature	14 °F to 115 °F (-10 °C to 46 °C)
Containment Volume	2.9 gal (11.4L) - Integral to skid. 1/4" FNPT drain port.
Maximum Overall Dimensions	46.5"W x 49.4"H x 35"D (118.11W x 125.73H x 88.9D cm)
Approximate Shipping Weight	Standard: 120 lb. (54 Kg) with mounted pumps: 140-240 lbs (109 Kg)



Dimensions



Dim	Inch	cm	Dim	Inch	cm
A	46.50"	118.11	E	49.50"	125.73
B	50.50"	128.27	F	32.40"	82.30
C	46.47"	118.04	G	35.00"	88.90
D	45.37"	115.24			

Model Number Matrix

CHEM-FEED® Duplex Skid System Matrix - Municipal

CFPS-2-M

CFPS-2	Dual pump system - PE structure																		
Inlet/Outlet																			
A	Single Inlet / Single Outlet																		
B	Single Inlet / Dual Outlet																		
X	None, Skid Panel Only																		
Piping/Unions																			
A	PVC				B	CPVC				C	PVDF				D	Chem Proline®			
Seals																			
V	FKM				E	EPDM													
Tubing Connections (Verify tubing connection matches pump outlet when ordering)																			
A	1/2" ID PVC Braided				B	1/2" ID PTFE				C	1/4" ID PE				D	1/4" ID PTFE			
Calibration Column																			
A	128 GPH (4000 mL) PVC				F	3 GPH (100 mL) PVC													
B	64 GPH (2000 mL) PVC				P	32 GPH (1000 mL) Glass													
C	32 GPH (1000 mL) PVC				Q	16 GPH (500 mL) Glass													
D	16 GPH (500 mL) PVC				R	6 GPH (200 mL) Glass													
E	8 GPH (250 mL) PVC				S	3 GPH (100 mL) Glass													
Pulsation Dampener (One dampener provided. Contact factory for second dampener.)																			
P	10 cubic in				X	Not Included													
Back Pressure Valve																			
B	Included				X	Not Included													
Pressure Gauge w/Guard																			
A	200 PSI				B	100 PSI				C	30 PSI								
Pressure Switch w/Guard																			
S	Included				X	Not Included													
Flow Meter w/Strainer																			
A	10-5000 mL/m				B	100-10000 mL/m													
X	Not Included																		
Terminal Box																			
TA	M3S/M4S/MD3S				TD	M3/M4/MD3 (Legacy)													
TB	M1/MD1				X	Not Included													
TC	M2/C2/C3																		
Pumps																			
P	Mounted*				X	Not Included													
*reference Adapter Kits Sheet 85000-198 when ordering with pumps utilizing "M = 1/2"MNPT " or "F = 1/2"FNPT" connections.																			
CFPS-2	M	A	A	V	A	-	A	P	B	A	S	A	TA	P	Sample Model Number				

NOTE: When ordering pumps for skids, pump head orientation is standard LEFT facing only. *When ordering skid with pumps of different model numbers, please include complete model number of each pump and location on skid with order. Contact factory for quote/pricing on 5-point performance testing. **Customer is responsible for ensuring skid components are compatible with any chemicals being used.**